

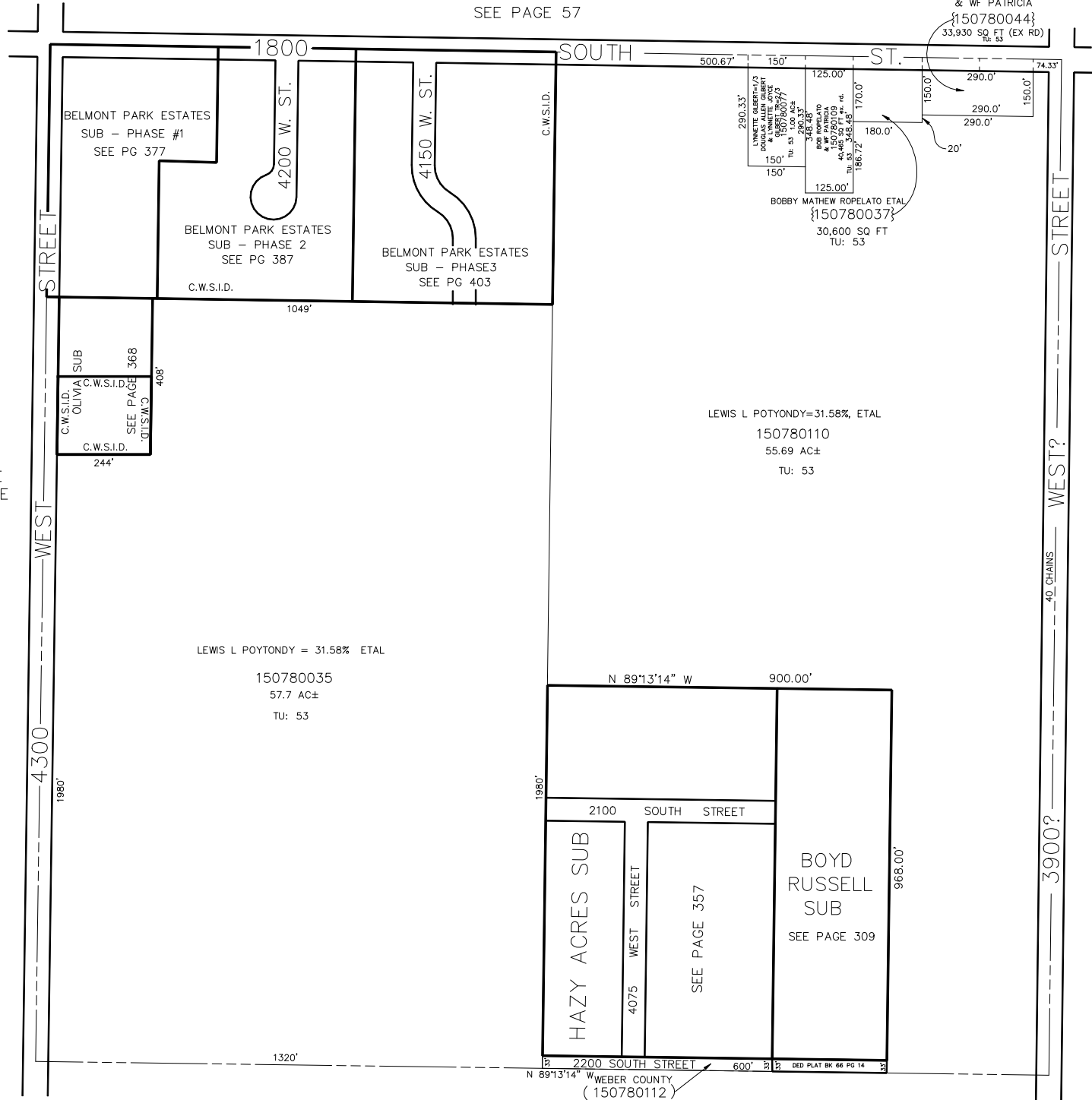
N.W. 1/4  
SECTION 28, T.6N., R.2W., S.L.B. & M.

IN WEBER COUNTY  
SCALE 1" = 200'

TAXING UNIT: 53,377

SEE PAGE 57

BOB ROPELATO & WF PATRICIA  
{150780044}  
33,930 SQ FT (EX RD)



SEE PAGE 80

SEE PAGE 78-1

SEE PAGE 78-3

2200 SOUTH STREET  
WEBER COUNTY  
(150780112)  
19,800 SQ FT  
TU: 53